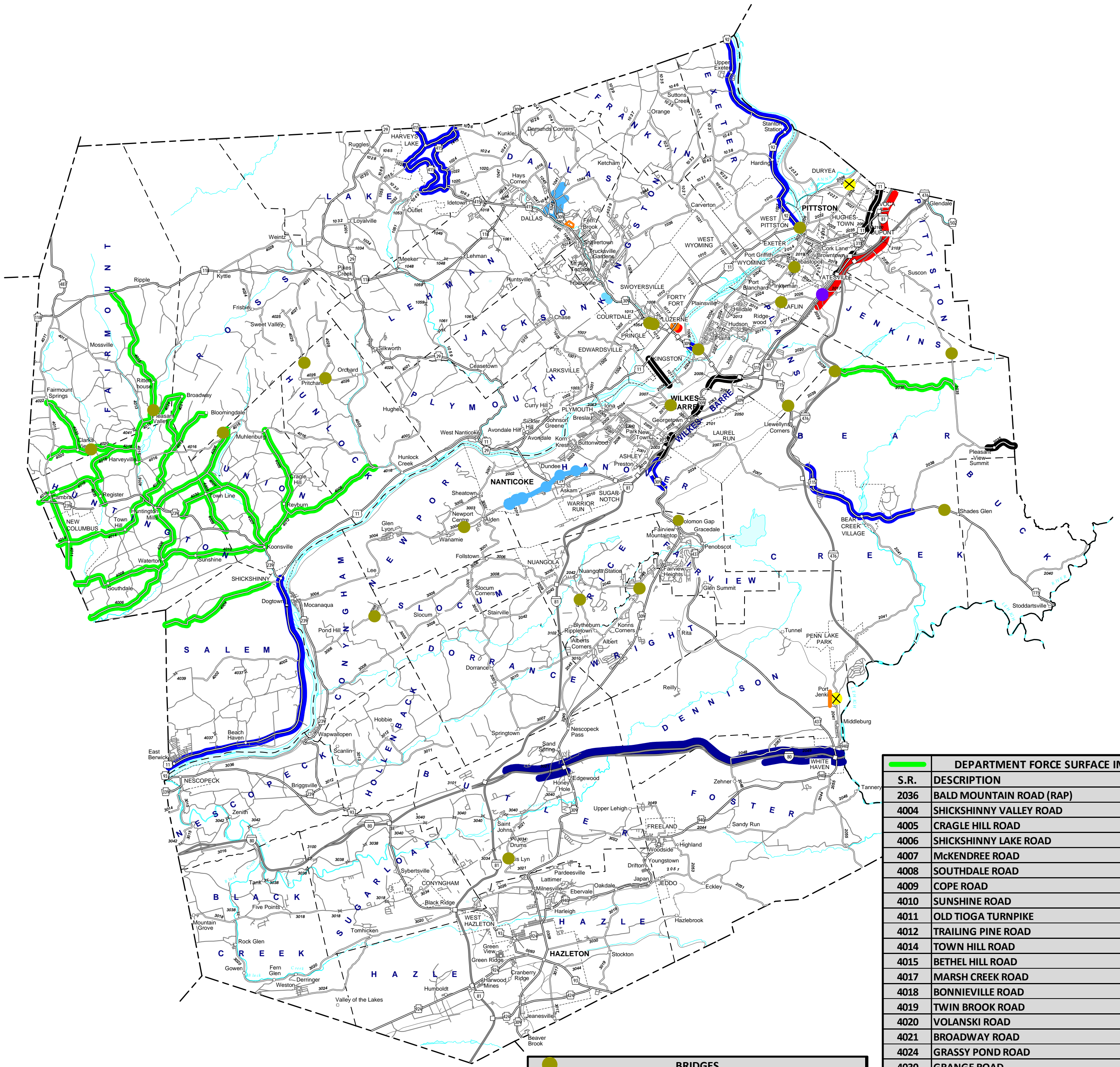


Luzerne County

2018 Construction Season



DEPARTMENT FORCE SURFACE IMPROVEMENTS		
S.R.	DESCRIPTION	MILES
2036	BALD MOUNTAIN ROAD (RAP)	4.92
4004	SHICKSHINNY VALLEY ROAD	4.23
4005	CRAGLE HILL ROAD	7.02
4006	SHICKSHINNY LAKE ROAD	9.86
4007	McKENDREE ROAD	3.69
4008	SOUTHDALE ROAD	3.41
4009	COPE ROAD	2.12
4010	SUNSHINE ROAD	3.85
4011	OLD TIOGA TURNPIKE	2.67
4012	TRAILING PINE ROAD	1.46
4014	TOWN HILL ROAD	4.01
4015	BETHEL HILL ROAD	7.03
4017	MARSH CREEK ROAD	2.31
4018	BONNIEVILLE ROAD	4.84
4019	TWIN BROOK ROAD	1.92
4020	VOLANSKI ROAD	2.61
4021	BROADWAY ROAD	1.93
4024	GRASSY POND ROAD	1.44
4030	GRANGE ROAD	1.91
4033	OLD COUNTY ROAD	2.11
4035	REGISTER ROAD	0.82
TOTAL		74.16

FEDERAL AID PAVING			
S.R.	ECMS	DESCRIPTION	MILES
0011	95435	MAIN STREET (AVOCA BORO)	1.65
0315	95435	DUPONT HWY.	1.86
0315	95435	AIRPORT ROAD	0.06
1009	102327	MARKET STREET (KINGSTON BORO)	2.33
2065	95435	MAIN STREET (AVOCA BORO)	0.28
6309	102327	BUSINESS 309	7.44
TOTAL			13.62

SURFACE IMPROVEMENTS			
S.R.	ECMS	DESCRIPTION	MILES
0011	108339	SALEM BLVD.	10.46
0092	107664	SULLIVAN TRAIL	8.58
0115	108339	BEAR CREEK BLVD.	4.86
0309	102327	MOUNTAIN BLVD.	2.29
0415	108339	MARKET STREET (KINGSTON BORO)	5.08
1415	108339	LAKESIDE DRIVE	3.84
8031	89012	RAMPS S.R. 309 TO RIVER STREET	0.36
TOTAL			35.47

INTERSTATE BRIDGES			
S.R.	ECMS	DESCRIPTION	MILES
0081	96321	NB/SB BRIDGE PRESERVATION, EPOXY OVERLAY	

BRIDGES		
S.R.	ECMS	DESCRIPTION
0011	95482	OVER SUSQUEHANNA RIVER, PITTSTON CITY
0115	P-3	OVER SHADES CREEK, BEAR CREEK TWP.
0115	95485	RETAINING WALL REPAIR, PLAINS TWP.
0309	89012	OVER SUSQUEHANNA RIVER, PLAINS TWP.
0309	105115	OVER S.R. 1013 (UNION STREET) LUZERNE BORO
0309	105115	OVER EVANS STREET, PRINGLE BORO
2007	95482	SOUTH STREET BRIDGE, WILKES-BARRE CITY
2015	93022	OVER GARDNER CREEK, PLAINS TWP.
2017	93022	OVER S.R. 2021, JENKINS TWP.
2035	93032	OVER MUD RUN CREEK, JENKINS TWP.
2036	93032	OVER MILL CREEK, BEAR CREEK TWP.
2045	67449	OVER BOW CREEK, WRIGHT TWP.
2047	67310	OVER HENRY DRIVE, RICE TWP. (REMOVAL)
3004	67396	OVER FORGE CREEK, NEWPORT TWP.
3006	93035	OVER POND CREEK, CONYNGHAM TWP.
3021	67343	OVER NESCOPECK CREEK, BUTLER TWP.
4016	93043	OVER SHICKSHINNY CREEK, UNION TWP.
4020	93044	OVER PINE CREEK, FAIRMOUNT TWP.
4024	93043	OVER HUNTINGTON CREEK, FAIRMOUNT TWP.
4025	89913	OVER ROARING BROOK, HUNLOCK TWP.
4026	93044	OVER LEWIS RUN, HUNLOCK TWP.
T-439	8776	OVER RBM RR, FAIRVIEW TWP. (REMOVAL)

SAFETY PROJECTS		
S.R.	ECMS	DESCRIPTION
0011	105383	TRAFFIC SIGNAL IMPROVEMENTS (ARLE PROGRAM)
0081	102001	CABLE MEDIAN BARRIER

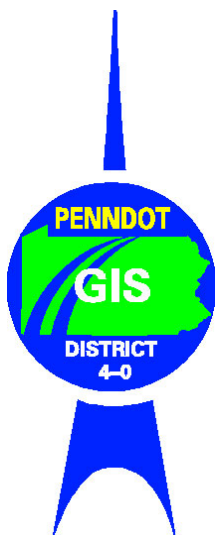
ROADWAY PROJECTS		
S.R.	ECMS	DESCRIPTION
0309	80754	MEMORIAL HWY. (SLOPE REPAIR)
0309	70249	
1041	70249	
1044	70249	DALLAS 5 LEG/UPPER DEMUNDS ROAD
1045	70249	
1047	70249	
2008	9234	SOUTH VALLEY PARKWAY *
3046	9234	

ENHANCEMENTS		
S.R.	ECMS	DESCRIPTION
0011	105176	FORTY FORT BORO MTM
2041	102909	D&L TRAIL RAIL CROSSING, DENNISON TWP.
LOCAL	104322	BACK MTN. RAIL TRAIL MILE 7

RAILROAD SAFETY PROJECTS		
S.R.	ECMS	DESCRIPTION
2031	106130	STEPHENSON STREET, LIGHTS, GATES, & SURFACE
2041	103211	MIDDLEBURG, LIGHTS, GATES, & SURFACE

INTERSTATE ROADWAY PROJECTS		
S.R.	ECMS	DESCRIPTION
0080	94465	S.R. 80 WB PRESERVATION
0080	110912	S.R. 80 EB PRESERVATION

* South Valley Parkway includes six roundabouts, two bridges, modification of S.R. 2008, and the creation of S.R. 3046



CRACK SEALING & LINE PAINTING WILL BE PERFORMED ON VARIOUS STATE ROUTES THROUGHOUT THE COUNTY
DAMAGED GUIDE RAIL AND MEDIAN BARRIER WILL BE REPAIRED AT VARIOUS LOCATIONS THROUGHOUT THE COUNTY
TREE TRIMMING
TREE TRIMMING WILL BE PERFORMED AT VARIOUS LOCATIONS ON STATE ROUTES THROUGHOUT THE COUNTY
BRIDGE MAINTENANCE
BRIDGE MAINTENANCE ACTIVITIES WILL BE PERFORMED ON VARIOUS BRIDGES THROUGHOUT THE COUNTY
SAFETY IMPROVEMENTS
SIGNING AND LIGHTING WILL BE UPGRADED AT VARIOUS SITES THROUGHOUT THE DISTRICT
PRODUCED BY:
GEOGRAPHIC INFORMATION DIVISION
BUREAU OF PLANNING & RESEARCH
FOR FURTHER INFORMATION OR COMMENTS CONTACT:
GIS COORDINATOR AT (570)-963-3312

Shown on these maps are projects started in previous construction seasons and projects that will be bid this calendar year but may span beyond the 2018 construction season.

Note: Department Force Surface Improvements are Oil & Chip unless otherwise noted